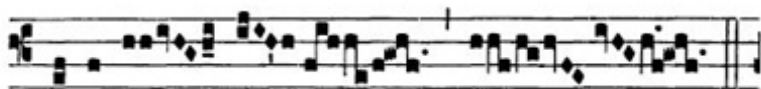
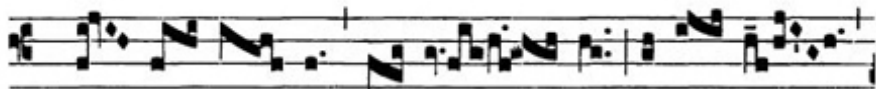


II

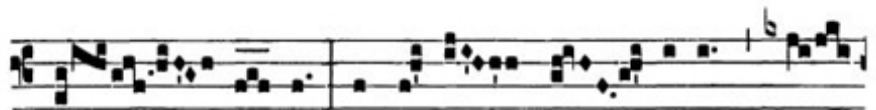
A



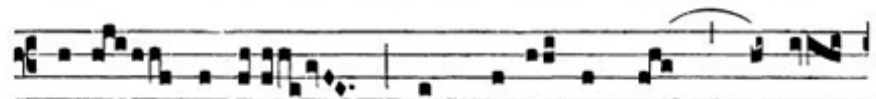
L-le-lú- ia.



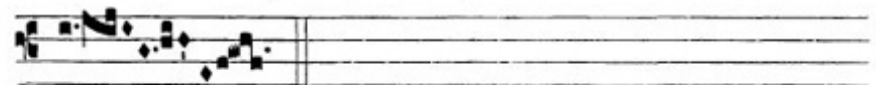
Y. Dó- mi- nus re-gná- vit, de-có- rem



ín- du- it : ín- du- it Dó- minus for-



ti-tú- di-nem, et praecin-xit se virtú-



te.

*Le Seigneur est Roi, il est revêtu de majesté ; le Seigneur a revêtu sa force, il s'est entouré de puissance.*