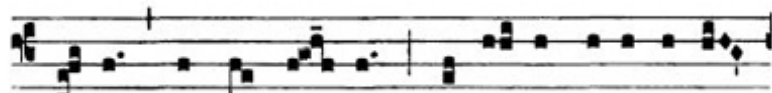
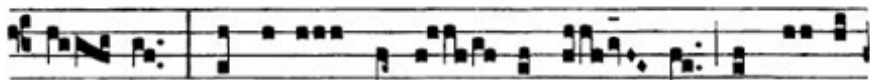


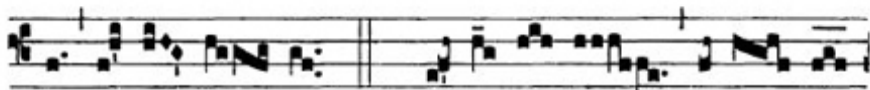
II
S



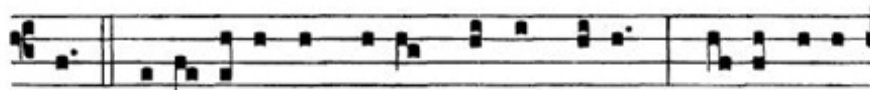
Alve *sancta Pa-rens, e-ní-xa pu-érpe-ra



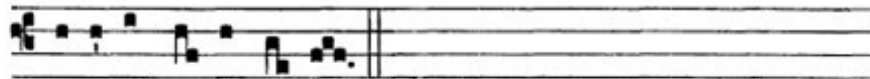
Re-gem, qui caelum terrám- que re- git in saé-cu-



la sae-cu- ló- rum. *T. P.* Al-le- lú- ia, al-le- lú-



ia. *Ps.* E-ructávit cor me- um verbum bonum : di- co ego



ópe-ra me- a re- gi.

Salut, sainte Mère, qui as mis au monde le Roi qui gouverne le ciel et la terre pour les siècle des siècles..

V/. Écoute, ma fille et regarde, incline ton oreille.

Le roi sera séduit par ta beauté : il est ton seigneur, prosterne-toi devant lui.